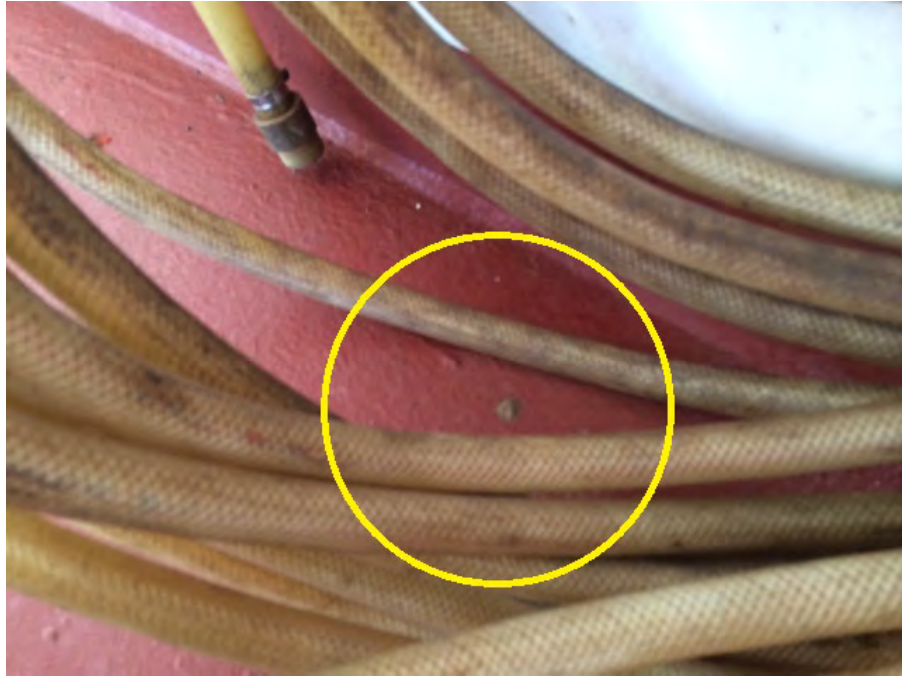


事例6 船種：CAR CARRIER 検査国：米国 卵塊発見個数：1個  
卵塊発見箇所：See below



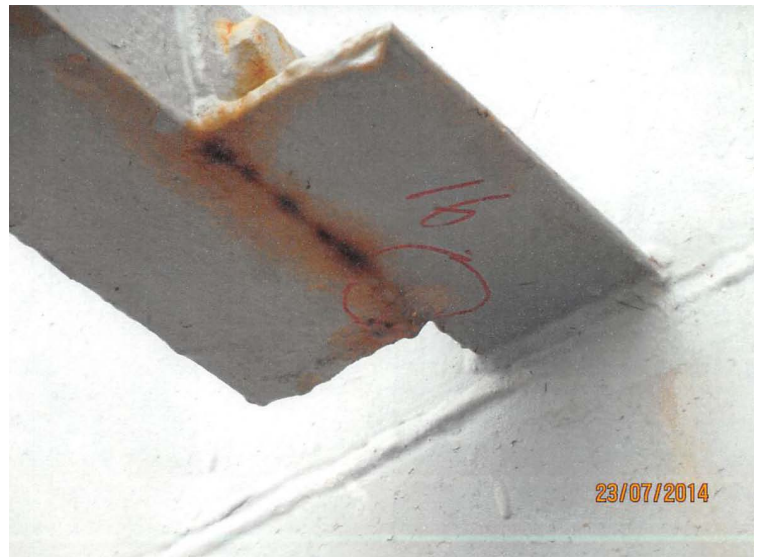
事例7 船種：BULK CARRIER 検査国：米国 卵塊発見個数：1個  
卵塊発見箇所：Port Side Life Boat Deck

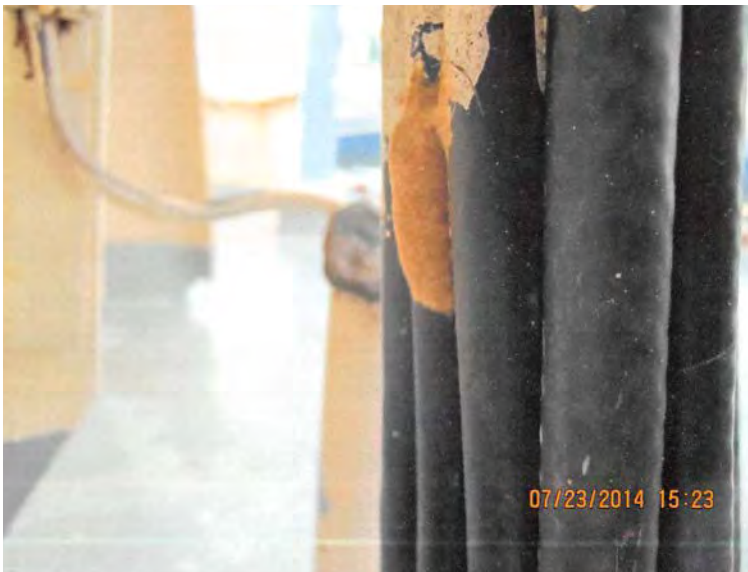


事例8 船種：CAR CARRIER 検査国：米国 卵塊発見個数：1個  
卵塊発見箇所：Superstructure wall under bridge window



事例9 船種：BULK CARRIER 検査国：カナダ 卵塊発見個数：74個  
卵塊発見箇所：Entire vessel





事例 10 船種：BULK CARRIER 検査国：カナダ 卵塊発見個数：5個  
卵塊発見箇所：Port-side parallel hand rail stanchion by hold 5/  
Compass deck port-side forward light/Forward starboard-side hold 1 hatch arm/  
Vent Aft-B-deck accommodations/Hold 4 hatch cover port-top side

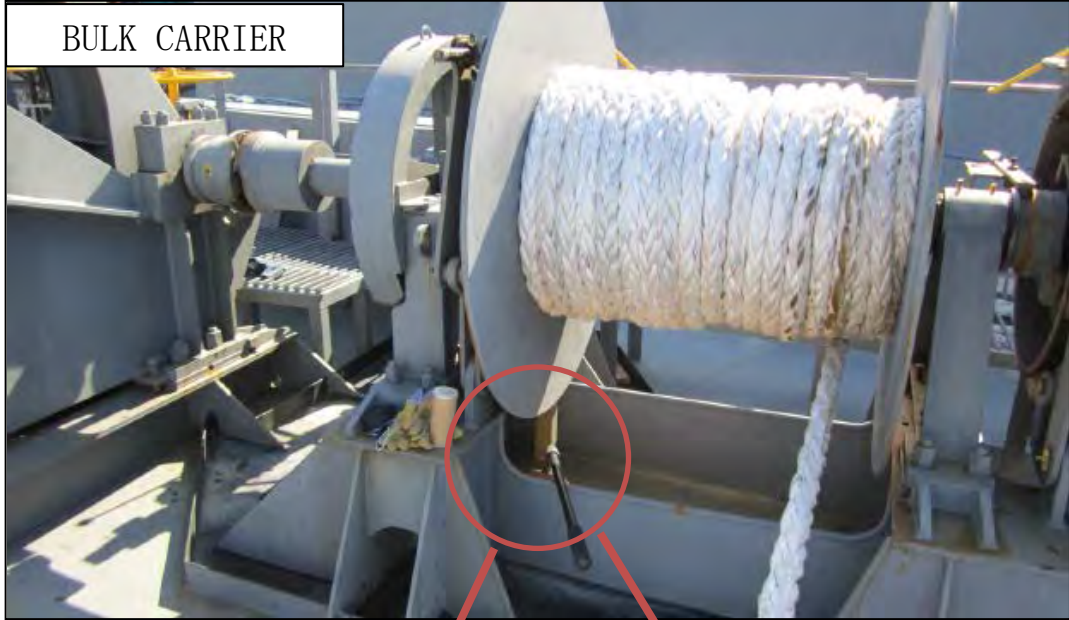


事例 1 1 船種：BULK CARRIER 検査国：カナダ 卵塊発見個数：15個  
卵塊発見箇所：Superstructure

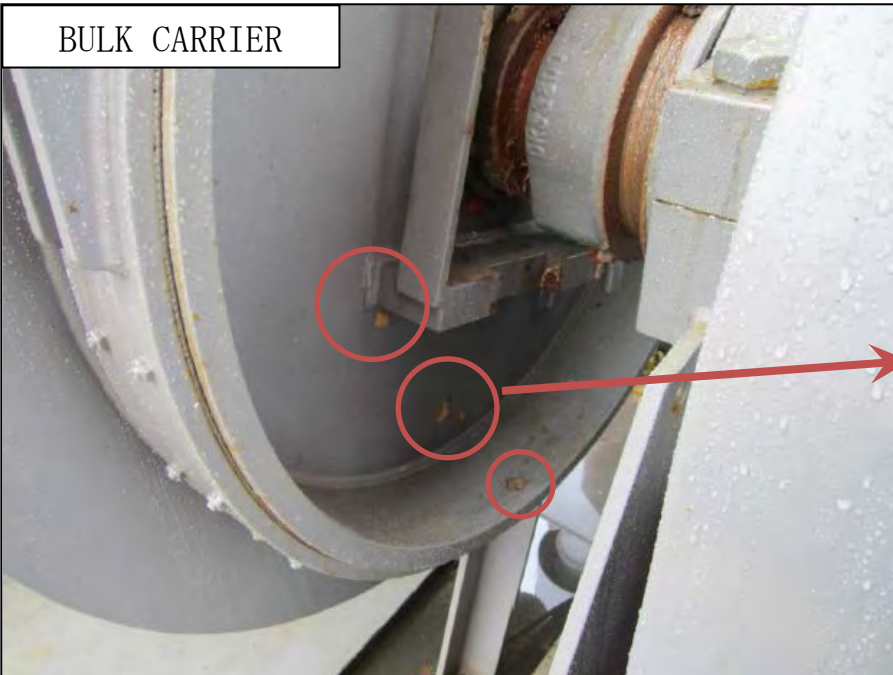


係留索

BULK CARRIER



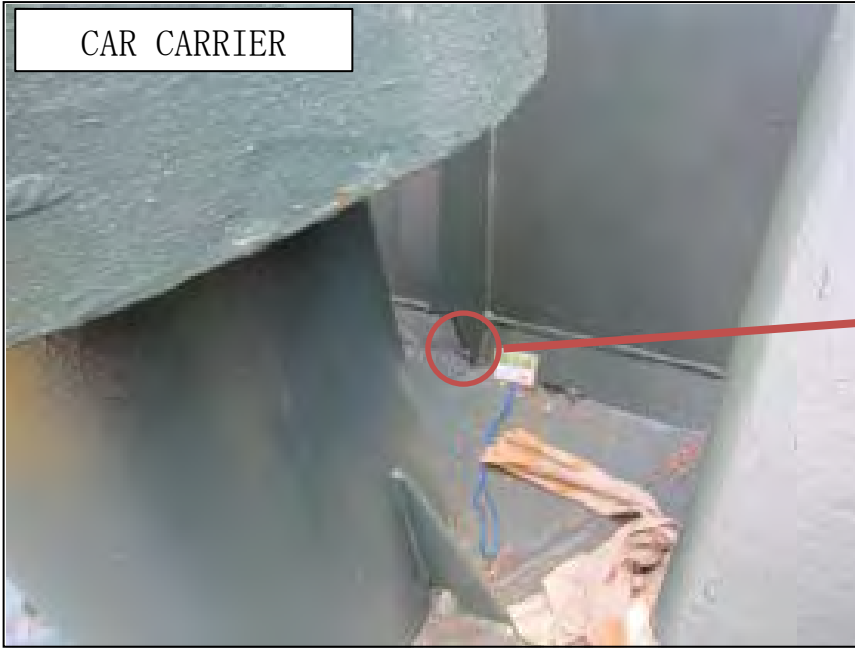
BULK CARRIER





係留索 (周辺)

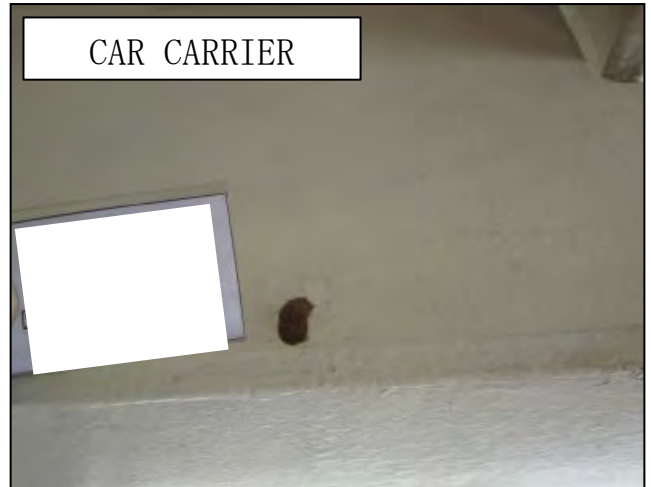
CAR CARRIER



CAR CARRIER



CAR CARRIER



ライト付近

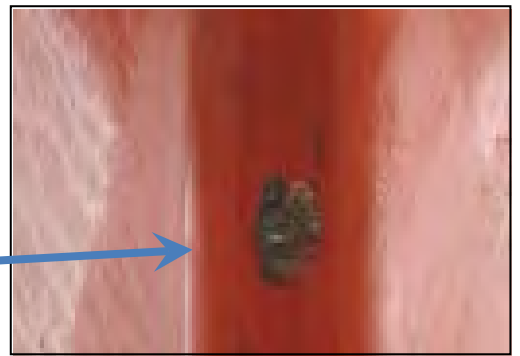
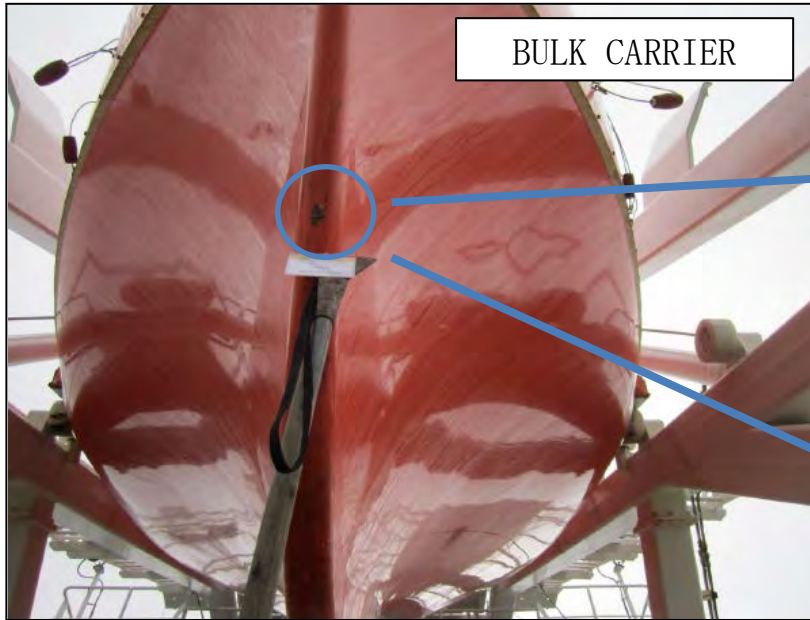
CARGO VESSEL



BULK CARRIER



救命ボート

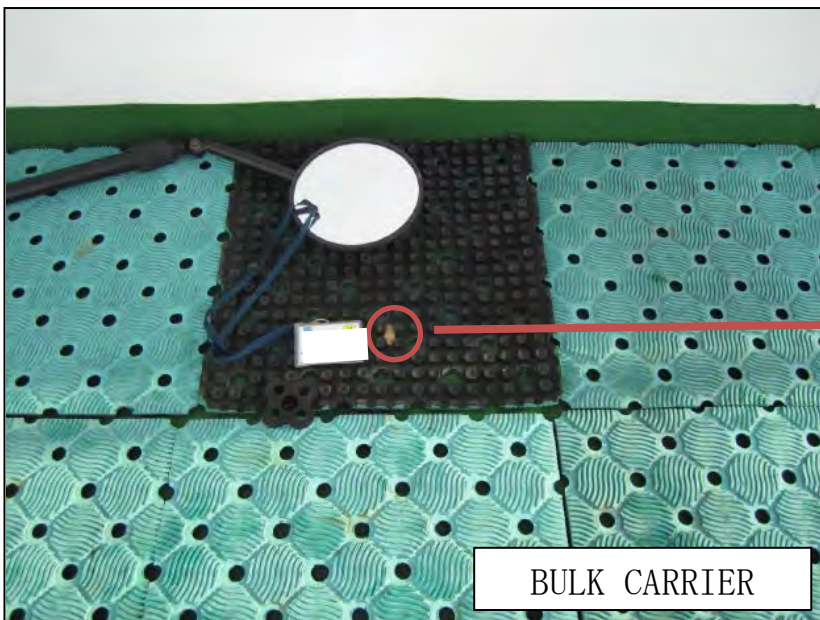
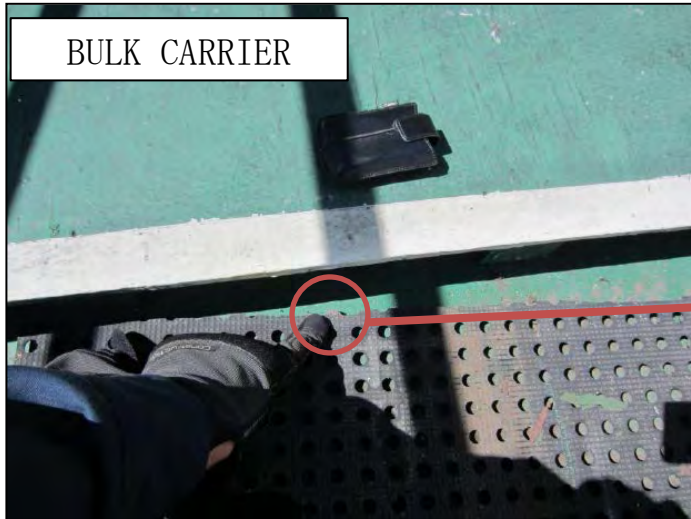


救命ボート (周辺)



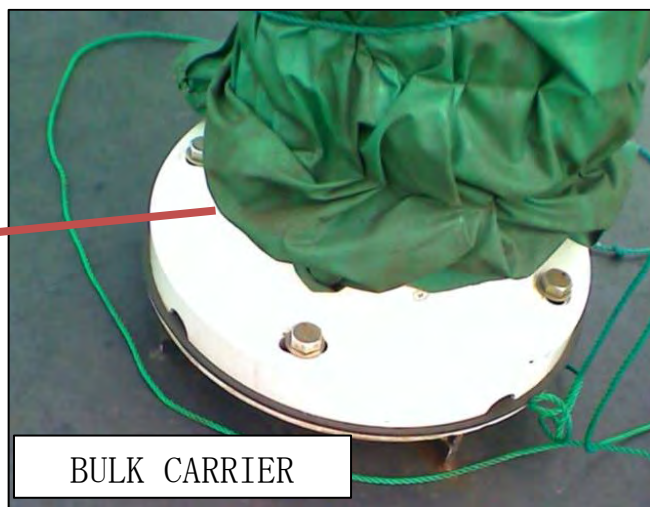
ラバーマット

BULK CARRIER



ビニールシート

BULK CARRIER

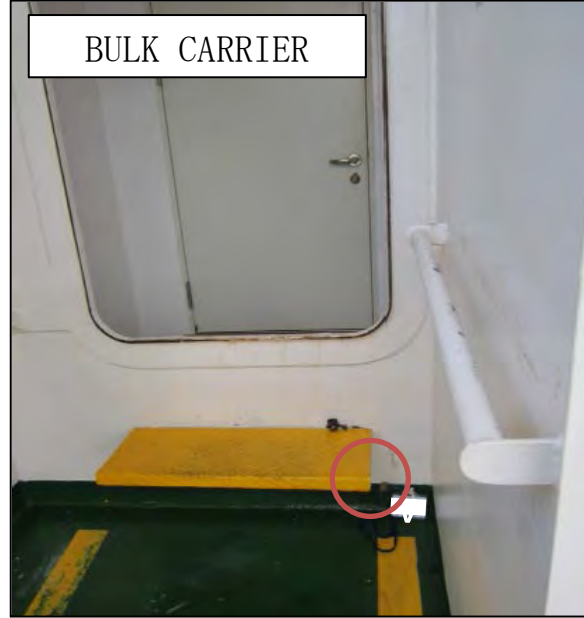


貯蔵庫、扉口等の囲われた空間部

BULK CARRIER

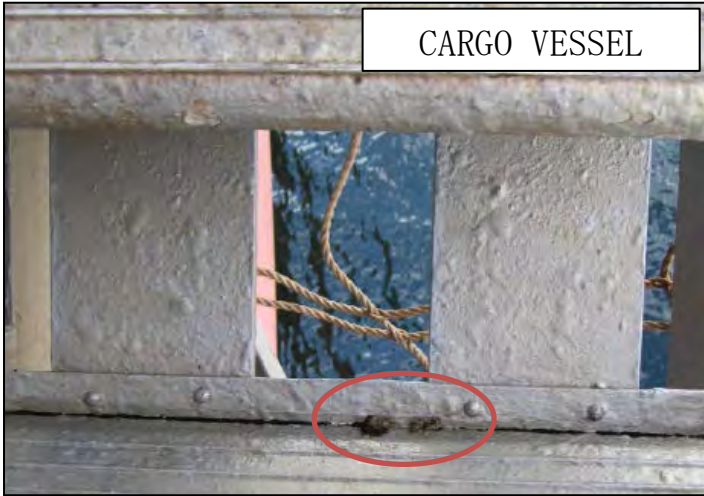


BULK CARRIER



ギャングウェイ

CARGO VESSEL



BULK CARRIER



CARGO VESSEL



キャットウォーク



CAR CARRIER



BULK CARRIER

